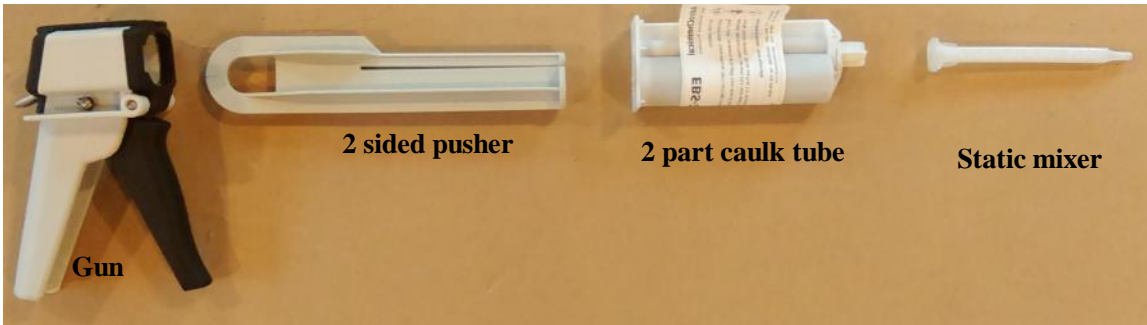
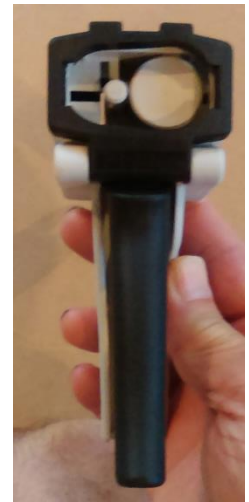
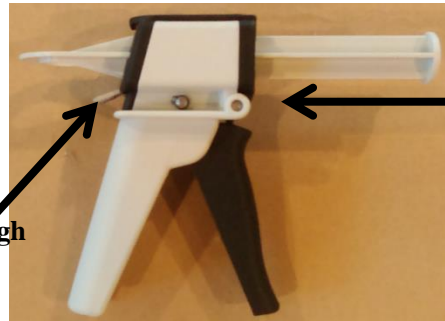
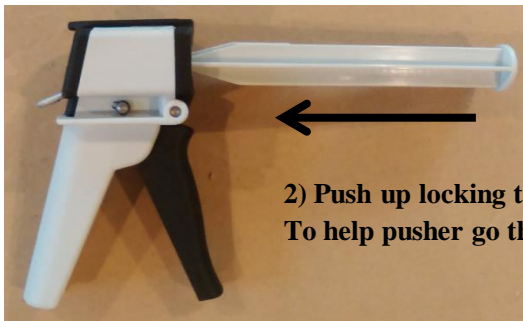


Graphite Cement- EBS-2X Caulking Gun Assembly



1) Insert 2 sided pusher into gun



2) Flip down the black locking bracket



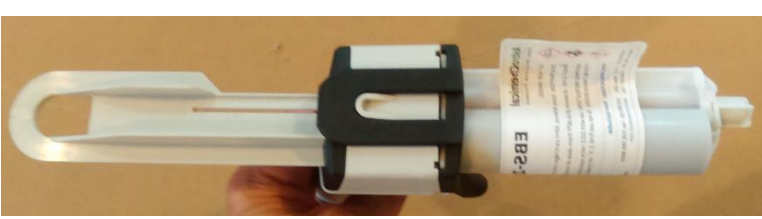
3) Insert the 2 sided
caulking tube into
the black locking
bracket

4) Flip up the black locking bracket
with caulking tube in place



5) Snap locking bracket into top of gun





5) Gun with caulk tube in place



6) Remove the tip off the cartridge by twisting & sliding it out



7) Set tip aside to put back on the cartridge after use



8) Slide the static mixer into the same holding slop on the cartridge



9) Start pumping the gun until the black graphite adhesive comes through the static mixer. The adhesive comes out of the mixer fully mixed

10) When finished, slide out the static mixer & throw it away. Replace the cap for the next use with a new static mixer